



# Cleaved-Thrombin R (S42) Polyclonal Antibody

|                           |   |
|---------------------------|---|
| <b>Catalog No</b>         | YP-Ab-12891   |
| <b>Isotype</b>            | IgG   |
| <b>Reactivity</b>         | Human;Rat;Mouse;  |
| <b>Applications</b>       | WB;ELISA  |
| <b>Gene Name</b>          | F2R   |
| <b>Protein Name</b>       | Proteinase-activated receptor 1   |
| <b>Immunogen</b>          | The antiserum was produced against synthesized peptide derived from human PAR1. AA range:23-72  |
| <b>Specificity</b>        | Cleaved-Thrombin R (S42) Polyclonal Antibody detects endogenous levels of fragment of activated Thrombin R protein resulting from cleavage adjacent to S42.   |
| <b>Formulation</b>        | Liquid in PBS containing 50% glycerol, 0.5% BSA and 0.02% sodium azide.   |
| <b>Source</b>             | Polyclonal, Rabbit,IgG  |
| <b>Purification</b>       | The antibody was affinity-purified from rabbit antiserum by affinity-chromatography using epitope-specific immunogen.   |
| <b>Dilution</b>           | Western Blot: 1/500 - 1/2000. ELISA: 1/20000. Not yet tested in other applications.   |
| <b>Concentration</b>      | 1 mg/ml   |
| <b>Purity</b>             | ≥90%  |
| <b>Storage Stability</b>  | -20°C/1 year  |
| <b>Synonyms</b>           | F2R; CF2R; PAR1; TR; Proteinase-activated receptor 1; PAR-1; Coagulation factor II receptor; Thrombin receptor  |
| <b>Observed Band</b>      | 46kD  |
| <b>Cell Pathway</b>       | Cell membrane; Multi-pass membrane protein.   |
| <b>Tissue Specificity</b> | Platelets and vascular endothelial cells.   |
| <b>Function</b>           | function:High affinity receptor for activated thrombin coupled to G proteins that stimulate phosphoinositide hydrolysis. May play a role in platelets activation and in vascular development.,PTM:A proteolytic cleavage generates a new N-terminus that functions as a tethered ligand.,PTM:Phosphorylated; probably mediating desensitization prior to the uncoupling and internalization of the receptor.,similarity:Belongs to the G-protein coupled receptor 1 family.,tissue specificity:Platelets and vascular endothelial cells., |
| <b>Background</b>         | Coagulation factor II receptor is a 7-transmembrane receptor involved in the regulation of thrombotic response. Proteolytic cleavage leads to the activation of the receptor. F2R is a G-protein coupled receptor family member. Alternative splicing results in multiple transcript variants. [provided by RefSeq, Aug 2015],  |



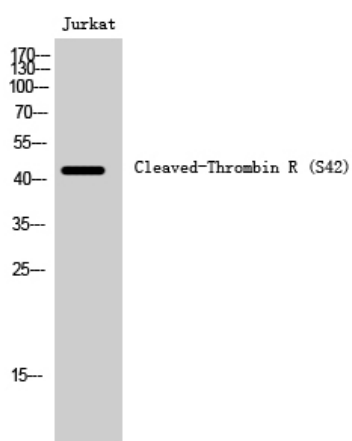
## matters needing attention

Avoid repeated freezing and thawing!

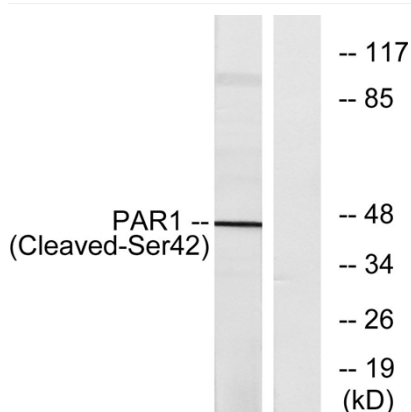
## Usage suggestions

This product can be used in immunological reaction related experiments. For more information, please consult technical personnel.

## Products Images



Western Blot analysis of Jurkat cells using Cleaved-Thrombin R (S42) Polyclonal Antibody



Western blot analysis of lysates from Jurkat cells, using PAR1 (Cleaved-Ser42) Antibody. The lane on the right is blocked with the synthesized peptide.